

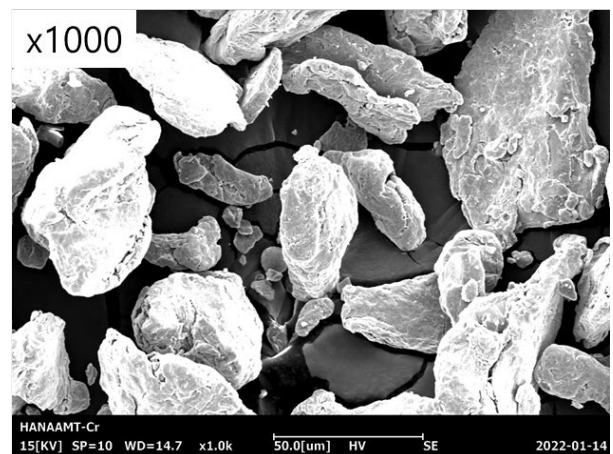
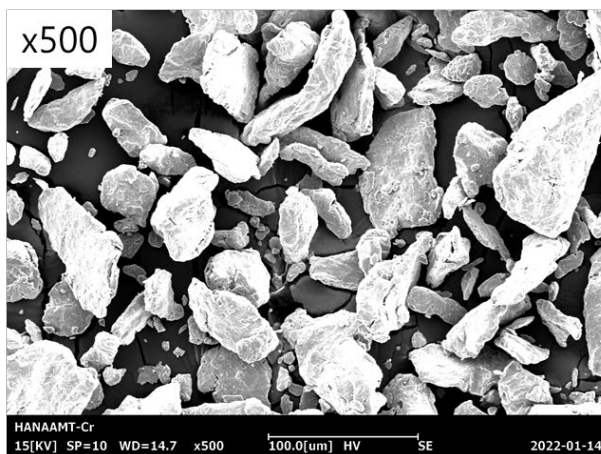
TECHNICAL DATA SHEET (TDS)

Product	Chrome powder
Chemical Formula	Cr
Chemical Name	Chrome
Product Description	steel-gray, lustrous, hard, metallic, and takes a high polish
Application	Die, Panel display, X-ray system, Alloy element, Catalyst, Electrode

SPECIFICATION

Particle size	D10 (μm)	D50 (μm)	D90 (μm)	Span	D(4,3)
		28.044	57.455	104.065	1.323
Chemical compositions (%)					
Cr	99.03				
Al	0.69				
Mn	0.15				
Si	0.09				
Cu	0.03				
O	353ppm				
Bulk density	2.76g/cm ³				

SEM



FROM POWDER TO PERFORMANCE

하나에이엠티(주), 충북 청주시 청원구 오창읍 각리1길 75 T. 043-2110-0046, F. 043-211-0048,

Email : hanaamt@hanaamt.com, <http://www.hanaamt.com>